

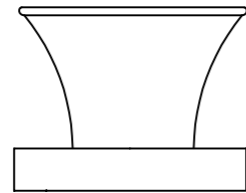
ALL DIMENSIONS IN MILLIMETRES U.O.S.

DO NOT SCALE DRAWING

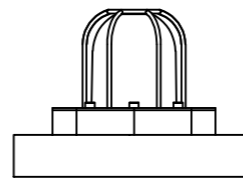
IF IN DOUBT – ASK

6

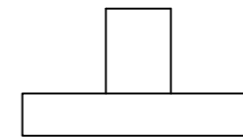
POSITION C  
SOUNDER



POSITION B  
BEACON



POSITION A  
PUSH BUTTON

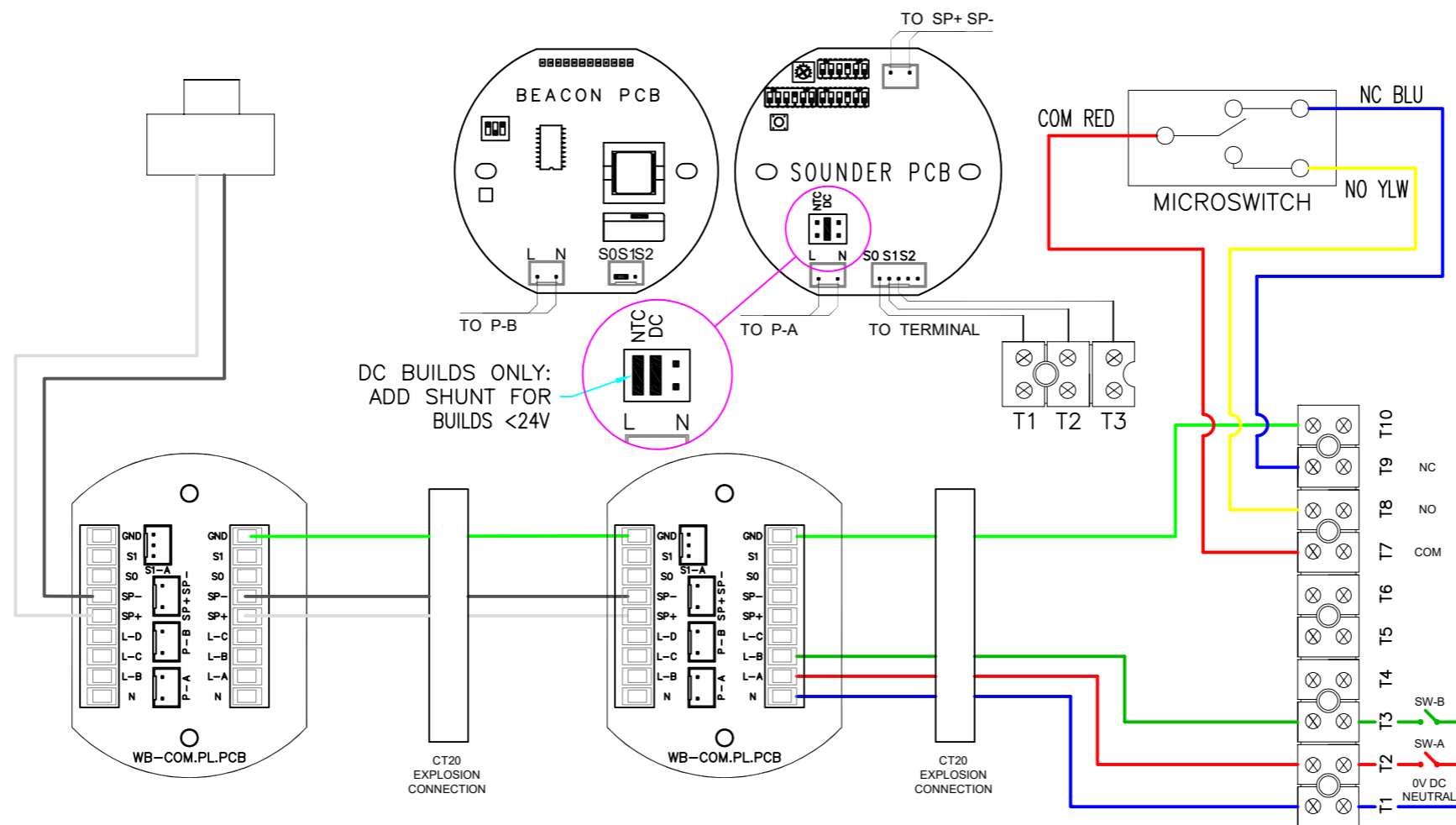


5

4

3

2



DC BUILDS ONLY:  
ADD SHUNT FOR  
BUILDS <24V

NOTE

1. BEACONS ARE PROVIDED WITH A 3 WAY JUMPER/SHUNT TO ACHIEVE STEADY STATE OPERATION. REPLACE THE SO/S1 2 PIN JUMPER/SHUNT WITH THE 3 WAY JUMPER/SHUNT IF STEADY STATE OPERATION IS DESIRED.

**WIRING AND FUNCTION**

FOR DC POWER SUPPLY:  
"L" EQUAL "B+", "N" EQUAL "0"

APPLY POWER SUPPLY:  
AC 100~230V OR DC 12V~48V TO  
"L"&"N"

CONNECT SW-A TO START SOUNDER  
IN POSITION B

CONNECT SW-B TO START BEACON IN  
POSITION B

TO ADJUST THE SOUNDER TONE,  
PLEASE REFER TO THE INSTRUCTION  
IN THE PRODUCT TECHNICAL MANUAL

TO ADJUST THE BEACON FLASHING  
FREQUENCY, PLEASE REFER TO THE  
INSTRUCTION IN THE PRODUCT  
TECHNICAL MANUAL.

DO NOT SUPPLY AC OR DC POWER TO  
S0/S1/S2

**Cable Selection**

Please select suitable size cable according to the distance between control room and the terminals and the quantity of equipments used.

Normal size for AC power supply cable L & N is 1.5mm<sup>2</sup>. Normal size for DC power supply cable L & N 2.5 mm<sup>2</sup>.

Please select the quantity of control cables (2 to 7) according to the actual requirement. Normal size for control cable is 1mm<sup>2</sup>.

1



DRAWN: KH	FINISH: AS PARTS	MATERIAL: AS PARTS
DATE: 13/12/2023	TITLE: EX-TECH WIRING DIAGRAM SB125/SB150	
CHECKED: SB	2P SD-BC-PB	
DATE: 06/02/24	STANDARD WIRING NO RESISTOR(S) NO DIODE(S)	

NO PART OF THIS DRAWING MAY BE REPRODUCED WITHOUT THE WRITTEN PERMISSION OF THE COMPANY

SCALE: A3	DWG No.	3
NTS	2069/A3	

A B C D E F G H I