

ALL DIMENSIONS IN MILLIMETRES U.O.S.

DO NOT SCALE DRAWING

IF IN DOUBT - ASK

6

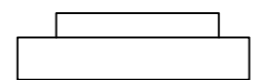
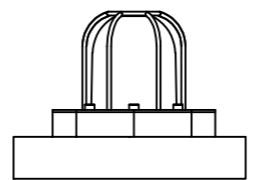
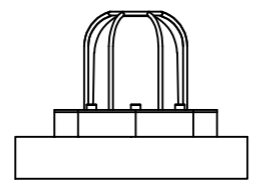
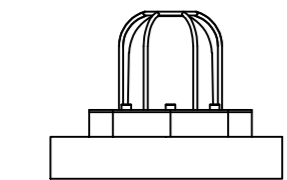
POSITION D
BEACON

POSITION C
BEACON

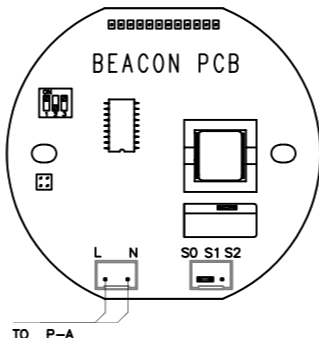
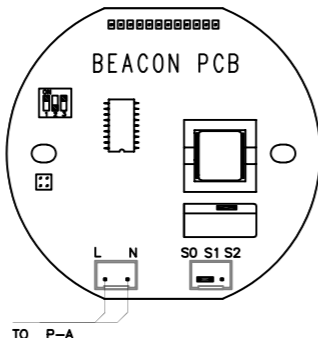
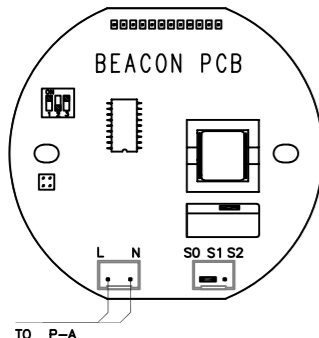
POSITION B
BEACON

POSITION A
JUNCTION BOX

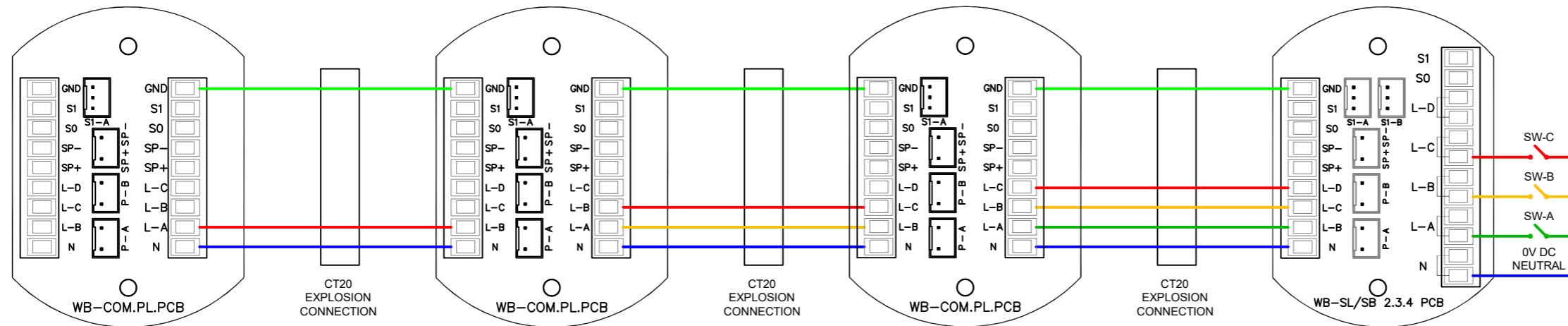
5



4



3



2

NOTE

1. BEACONS ARE PROVIDED WITH A 3 WAY JUMPER/SHUNT TO ACHIEVE STEADY STATE OPERATION. REPLACE THE S0/S1 2 PIN JUMPER/SHUNT WITH THE 3 WAY JUMPER/SHUNT IF STEADY STATE OPERATION IS DESIRED.

WIRING AND FUNCTION

FOR DC POWER SUPPLY:
"L" EQUAL "B+", "N" EQUAL "0"

APPLY POWER SUPPLY:
AC 100~230V OR DC 12V~48V TO
"L"&"N"

CONNECT SW-A TO START BEACON
IN POSITION B

CONNECT SW-B TO START BEACON
IN POSITION C

CONNECT SW-C TO START BEACON
IN POSITION D

TO ADJUST THE BEACON FLASHING
FREQUENCY, PLEASE REFER TO THE
INSTRUCTIONS IN THE PRODUCT
TECHNICAL MANUAL.

DO NOT SUPPLY AC OR DC POWER
TO S0 /S1/ S2

Cable Selection

Please select suitable size cable
according to the distance between control
room & the terminals and the quantity of
equipments used.

Normal size for AC power supply cable L
& N is 1.5mm² . Normal size for DC power
supply cable L & N 2.5 mm² .

Please select the quantity of control
cables (2 to 7) according to the actual
requirement. Normal size for control cable
is 1mm² .

1



DRAWN: KH	FINISH: AS PARTS	MATERIAL: AS PARTS
DATE: 22/01/2024	TITLE: EX-TECH WIRING DIAGRAM SL125/SL150	
CHECKED: SB	C4J BC-BC-BC-JB	
DATE: 22/01/2024	STANDARD WIRING NO RESISTOR(S) NO DIODE(S)	

NO PART OF THIS DRAWING MAY BE REPRODUCED WITHOUT THE WRITTEN PERMISSION OF THE COMPANY

SCALE: A3
NTS

DWG No.
2087/A3

3

A B C D E F G H I