

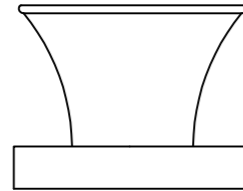
ALL DIMENSIONS IN MILLIMETRES U.O.S.

DO NOT SCALE DRAWING

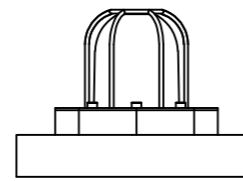
IF IN DOUBT - ASK

6

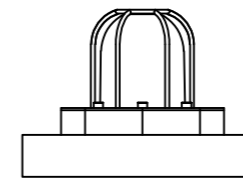
POSITION C
SOUNDER



POSITION B
BEACON



POSITION A
BEACON



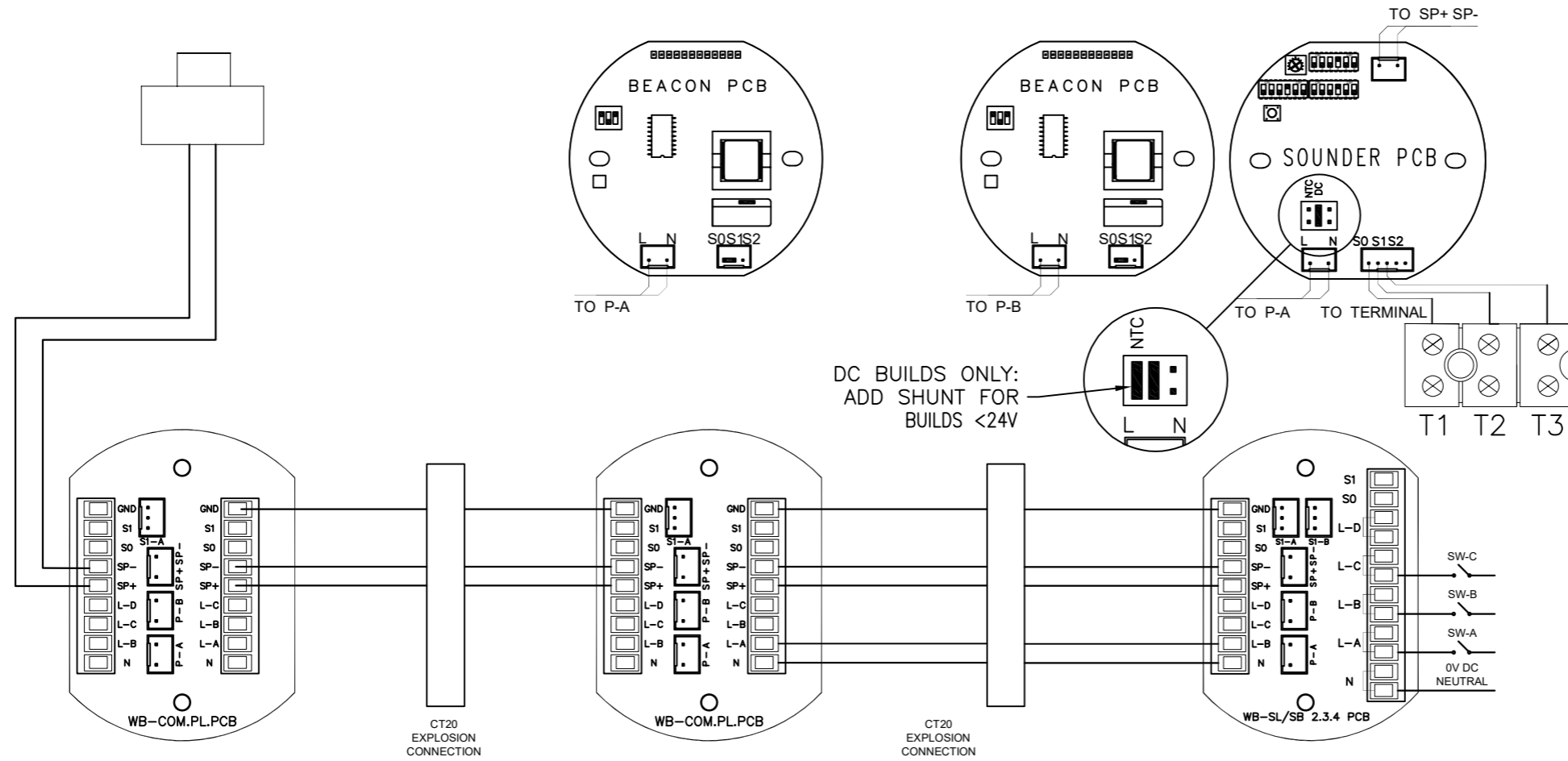
5

4

3

2

1



DC BUILDS ONLY:
ADD SHUNT FOR
BUILDS <24V

WIRING AND FUNCTION

FOR DC POWER SUPPLY:
"L" EQUAL "B+", "N" EQUAL "0"

APPLY POWER SUPPLY:
AC 100~230V OR DC 12V~48V TO
"L"&"N"

CONNECT SW-A TO START SOUNDER
IN POSITION C

CONNECT SW-B TO START BEACON IN
POSITION A

CONNECT SW-C TO START BEACON IN
POSITION B

TO ADJUST THE SOUNDER TONE,
PLEASE REFER TO THE INSTRUCTION
IN THE PRODUCT TECHNICAL MANUAL

TO ADJUST THE BEACON FLASHING
FREQUENCY, PLEASE REFER TO THE
INSTRUCTION IN THE PRODUCT
TECHNICAL MANUAL.

DO NOT SUPPLY AC OR DC POWER TO
S0 /S1/ S2

Cable Selection

Please select suitable size cable
according to the distance between control
room and the terminals and the quantity of
equipments used.

Normal size for AC power supply cable L
& N is 1.5mm². Normal size for DC power
supply cable L & N 2.5 mm².

Please select the quantity of control
cables (2 to 7) according to the actual
requirement. Normal size for control cable
is 1mm².

NOTE
1. GREEN LENSES ARE PROVIDED WITH A 3 WAY JUMPER/SHUNT TO ACHIEVE STEADY STATE OPERATION. REPLACE THE S0/S1 2 PIN JUMPER/SHUNT WITH THE 3 WAY JUMPER/SHUNT IF STEADY STATE OPERATION IS DESIRED.

Ex-tech
Signalling

DRAWN: KH	FINISH: AS PARTS	MATERIAL: AS PARTS
DATE: 03/02/2025	TITLE: EX-TECH WIRING DIAGRAM	
CHECKED:	2B SD-BC-BC	
DATE:	STANDARD WIRING NO RESISTOR(S) NO DIODE(S)	

NO PART OF THIS DRAWING MAY BE REPRODUCED WITHOUT THE WRITTEN PERMISSION OF THE COMPANY

SCALE: A3
NTS

DWG No.
2152/A3

1

A B C D E F G H I