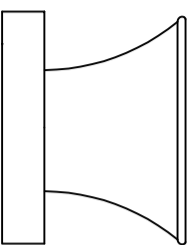


ALL DIMENSIONS IN MILLIMETRES U.O.S.

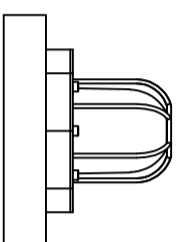
DO NOT SCALE DRAWING

IF IN DOUBT – ASK

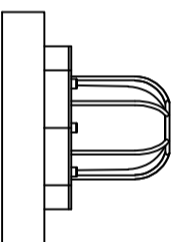
POSITION D
SOUNDER



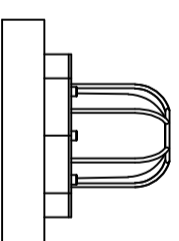
POSITION C
BEACON



POSITION B
BEACON



POSITION A
BEACON



WIRING AND FUNCTION

FOR DC POWER SUPPLY:
"L" EQUAL "B+", "N" EQUAL "0"
APPLY POWER SUPPLY:
AC 100-230V OR DC 12V-48V TO
"L" & "N"

**CONNECT SW-A TO START
SOUNDER**

**CONNECT SW-D TO START
BEACON IN POSITION A**

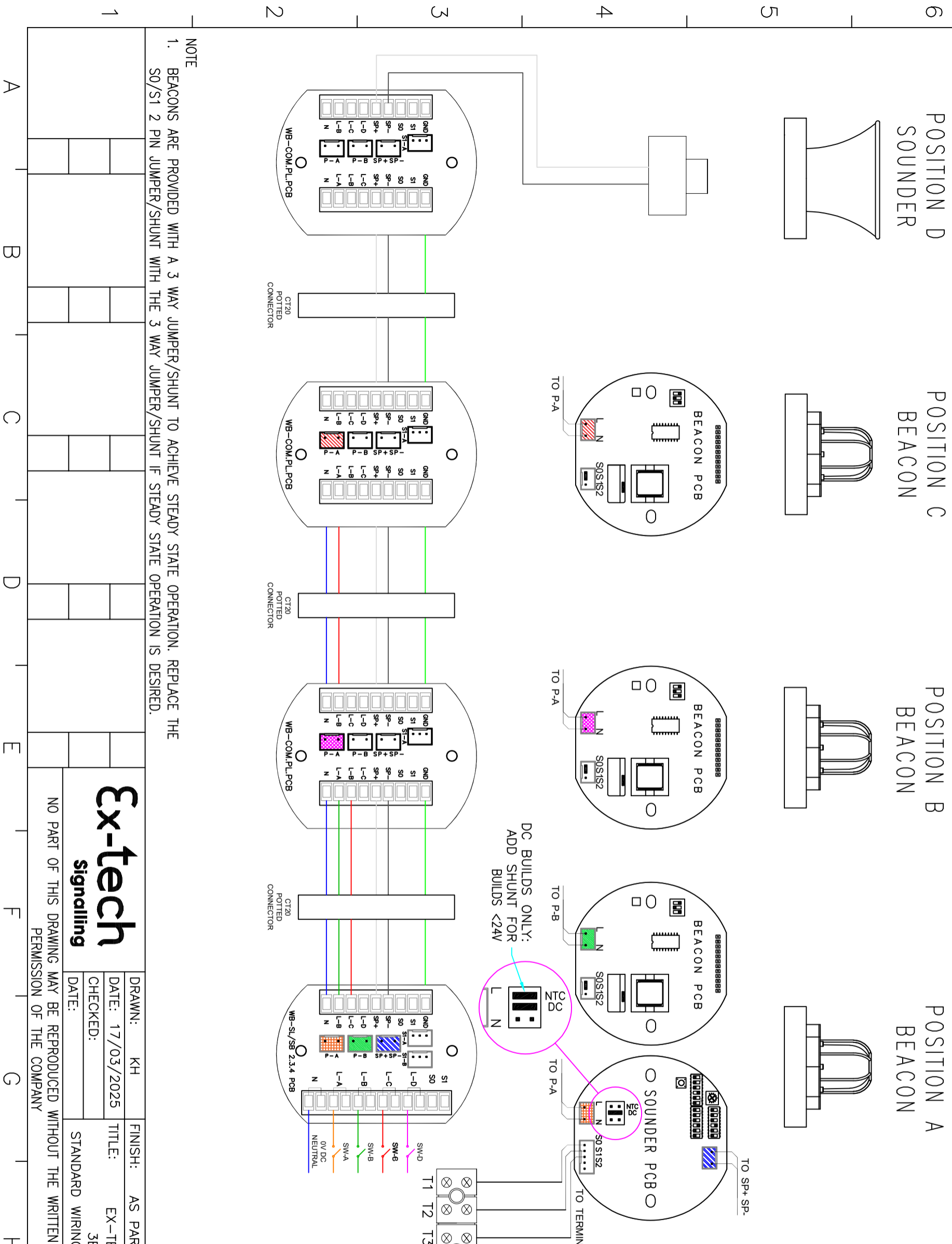
**CONNECT SW-B TO START
BEACON IN POSITION B**

**CONNECT SW-C TO START
BEACON IN POSITION C**

**TO ADJUST THE SOUNDER TONE,
PLEASE REFER TO THE
INSTRUCTIONS IN THE PRODUCT
TECHNICAL MANUAL**

**TO ADJUST THE BEACON
FLASHING FREQUENCY, PLEASE
REFER TO THE INSTRUCTIONS IN
THE PRODUCT TECHNICAL
MANUAL.**

**DO NOT SUPPLY AC OR DC
POWER TO S0/S1/S2**



NOTE
1. BEACONS ARE PROVIDED WITH A 3 WAY JUMPER/SHUNT TO ACHIEVE STEADY STATE OPERATION. REPLACE THE S0/S1 2 PIN JUMPER/SHUNT WITH THE 3 WAY JUMPER/SHUNT IF STEADY STATE OPERATION IS DESIRED.

Cable Selection
Please select suitable size cable according to the distance between control room and the terminals and the quantity of equipments used.
Normal size for AC power supply cable L & N is 1.5mm². Normal size for DC power supply cable L & N 2.5 mm².
Please select the quantity of control cables (2 to 7) according to the actual requirement. Normal size for control cable is 1mm².

1	A	B	C	D	E	F	G	H	I
DRAWN: KH		FINISH: AS PARTS		MATERIAL: AS PARTS					
DATE: 17/03/2025		TITLE: EX-TECH WIRING DIAGRAM							
CHECKED:		STANDARD WIRING NO RESISTOR(S) NO DIODE(S)							
DATE:		SCALE@A3		DWG No.					
NO PART OF THIS DRAWING MAY BE REPRODUCED WITHOUT THE WRITTEN PERMISSION OF THE COMPANY		NTS		2157/A3					
						1			

